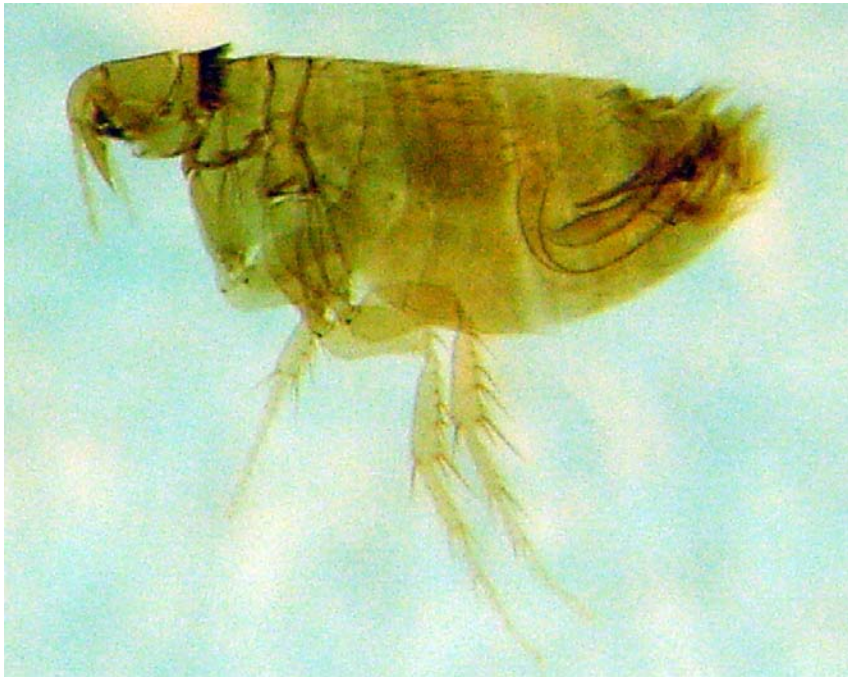
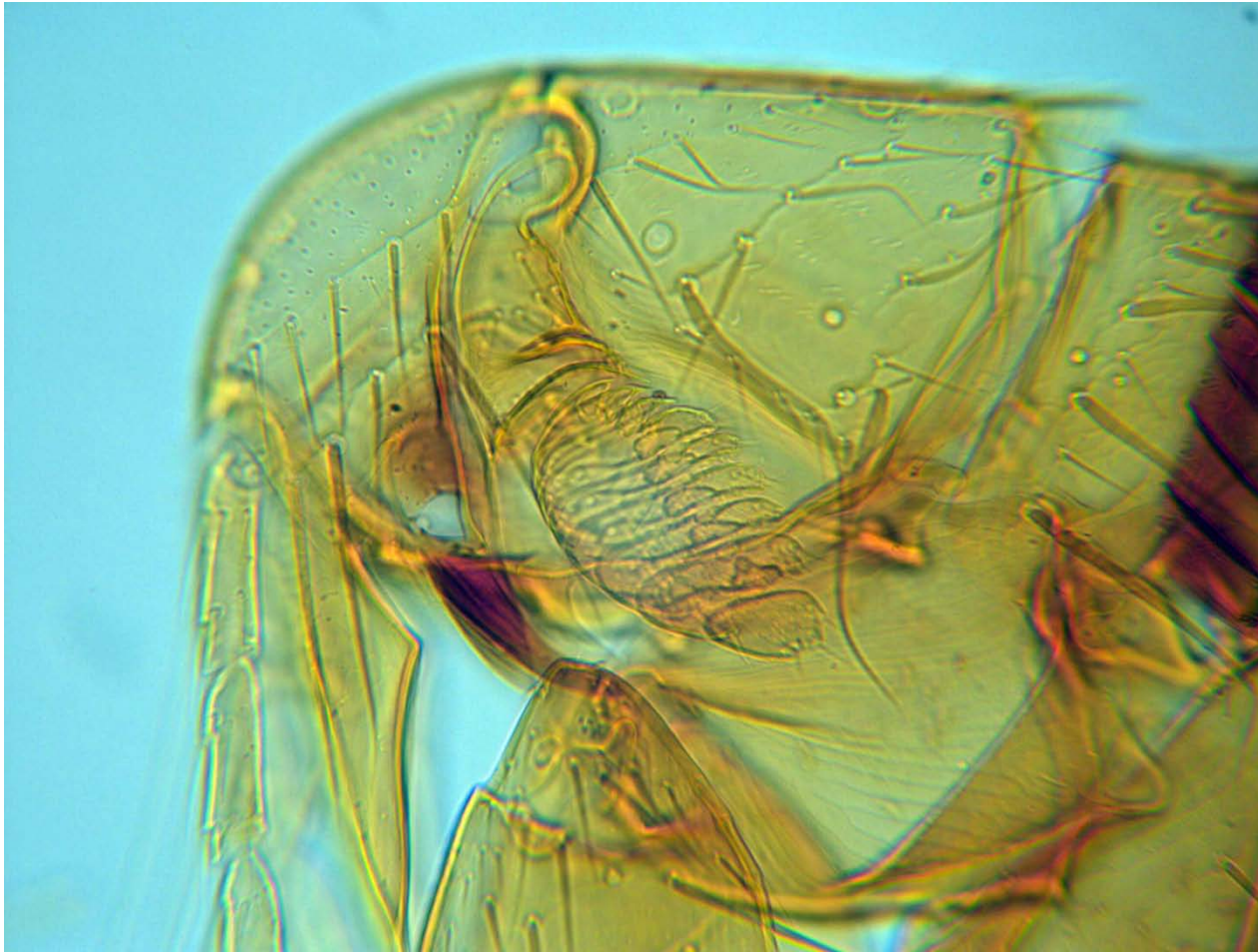


Epitedia wenmanni: male (left); female (right).

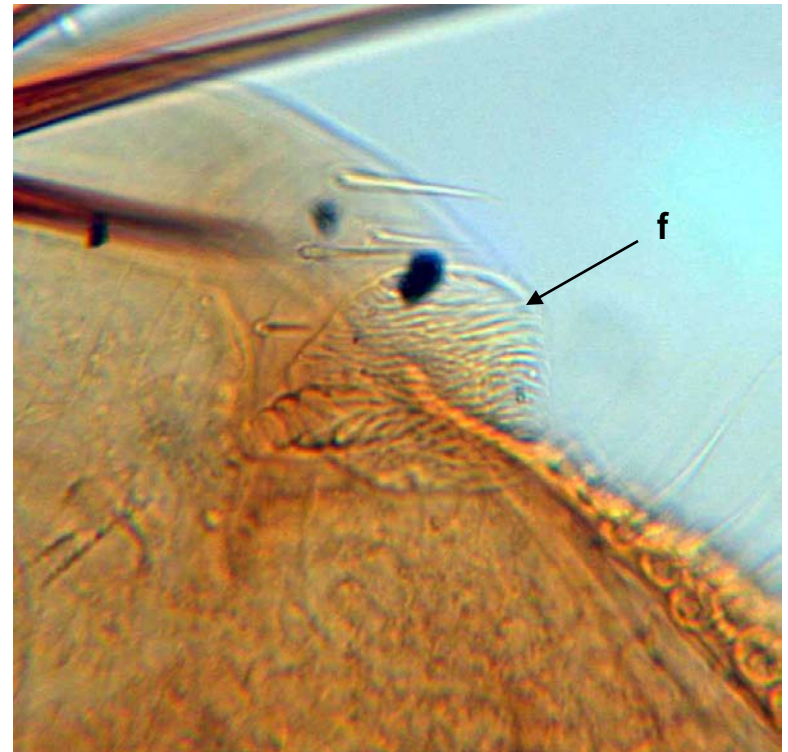


Epitedia wenmanni; characteristic genal ctenidium with 2 teeth.





Epitedia wenmanni female.
Note that in this species tail of spermatheca projects deeply into lumen of body. Note also: spiracular fossa (f).





Epitedia wenmanni male genitalia;
sternum IX (arrow) with heavy bristles.